

MC-QC60-5

Date of printing 25-5-2024

Technical data

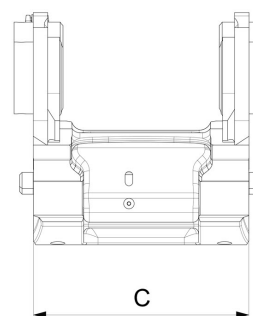
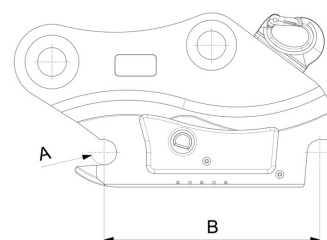
NOTE: The photo shows a general example of the product.

[Weight]	155 kg
[MaxLockPressure]	350 bar
[MaxPositiveTourque]	165 kNm
[MaxNegativeTourque]	108 kNm
[MaxLoad]	5000 kg
[MaxMachineWeight]	19000 kg
[MaxWorkPressure]	35 MPa
[MinNoOfCouplings]	2
[MaxNoOfCouplings]	5
Max flow 3/4"	193 l/min
Max flow 1/2"	92 l/min
Max flow 1/4"	22 l/min
Max flow 3/8"	40 l/min



Measurement specification

A	B	C
Ø60 mm	480 mm	339 mm



The products in the photos may have additional accessories and features. Technical data and weights may vary depending on the configuration and equipment. We reserve the right to change specifications or designs without prior notice and assume no responsibility for any actual errors that may occur. There may be variations in product programs and equipment standards between the markets. For more information concerning current product specifications, local adaptations and special equipment, please contact your nearest sales office.